

CIMS Cloud!

As many of you know, for the past few months, we've been focusing much of our efforts on the development of CIMS Cloud, our web based cemetery management software. To date, we have over 40 cemeteries "live" on CIMS Cloud. We would like to continue to educate our clients on the benefits of the Cloud Platform, and move clients to the Cloud when they are ready.

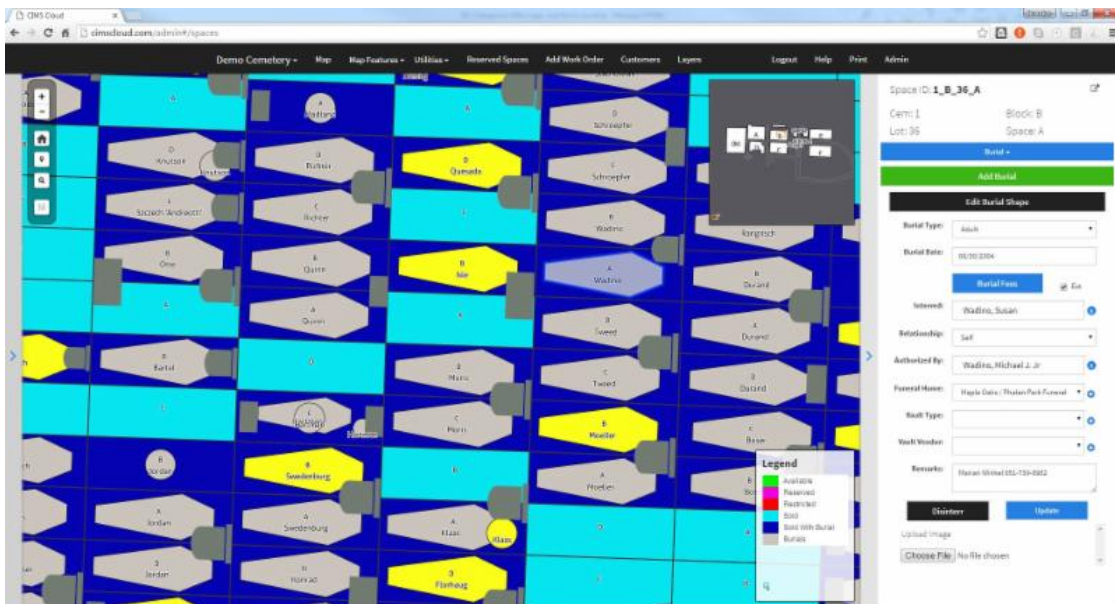
How can I learn more about CIMS Cloud?

If you would just like to chat and find out more information about CIMS Cloud, you can call our office at 800-332-7532. We are also holding several GoToMeeting webinars where we will be demonstrating CIMS Cloud. These are scheduled for the following times/dates:

- Thursday, December 1st at 10:00 AM CST
- Tuesday, December 6th at 2:00 PM CST
- Wednesday, December 14th at 10:00 AM CST
- Thursday, January 12th at 2:00 PM CST
- Wednesday, January 25th at 10:00 AM CST

If you are interested in signing up for one of these webinars, send an email to cims@ramaker.com.

Or, as an alternative you can watch our YouTube training video at: <https://www.youtube.com/watch?v=sODl1tMvy4Q>.



What's the difference between CIMS Cloud and regular CIMS or CIMS Light?
 CIMS Cloud is 100% Internet based. Your software and data is no longer on your computer. It is instead accessed through the <http://cimscloud.com> website, and you will be able to access it anywhere you have an internet connection. However, this DOES NOT mean your cemetery information is available to the public. Only users with your username and password will be able to see your cemetery data on CIMS Cloud. CIMS Cloud is hosted on Amazon Web Services. They are the largest and most reliable web host in the world. With your data on Amazon Web Services, you can be confident that your information will be accessible and that it will be backed up.

In addition, we've added some cool features to CIMS Cloud that help make it easier to manage your cemetery data. Some items that have had great feedback from our clients include:

- There is no limit on the number of images you can have for owners, burials, markers or customers.
- You can have unique identifiers for different parts of your cemetery. For example one area may have sections, blocks, lots and graves, but a mausoleum might have a Wall, Side, Row and Number.
- The ability to have multiple deeds instead of just one. For example, you might use one deed for ground spaces, and a different deed for columbariums.
- You can use PDF's and images in all the places you could previously only "link" images.
- If you have eCIMS, the eCIMS data is updated instantly, no need to send Ramaker a file for updating.

How much will CIMS Cloud Cost?

For most clients who are current on annual maintenance, and don't require any changes to the maps or reports, there will be no cost to transition from CIMS or CIMS Light to CIMS Cloud. There will be a small increase in your maintenance fee. If you are not current on your maintenance, we will provide a quote for migrating.

I'm interested in making my cemetery data available to the public so they can do their own genealogy searches, will CIMS Cloud help with that?

CIMS Cloud is designed to be used by cemetery managers, not the public. However, if you are interested in sharing your CIMS or CIMS Light information with the public, but limiting what they can see and search on, we offer a product called eCIMS. And if your data is in CIMS Cloud, the instant you add a new burial or owner, it is instantly

available in eCIMS. If you are interested in eCIMS, please reach out to us at cims@ramaker.com. You can also check out some sample sites at: <http://www.burialsearch.com/>.

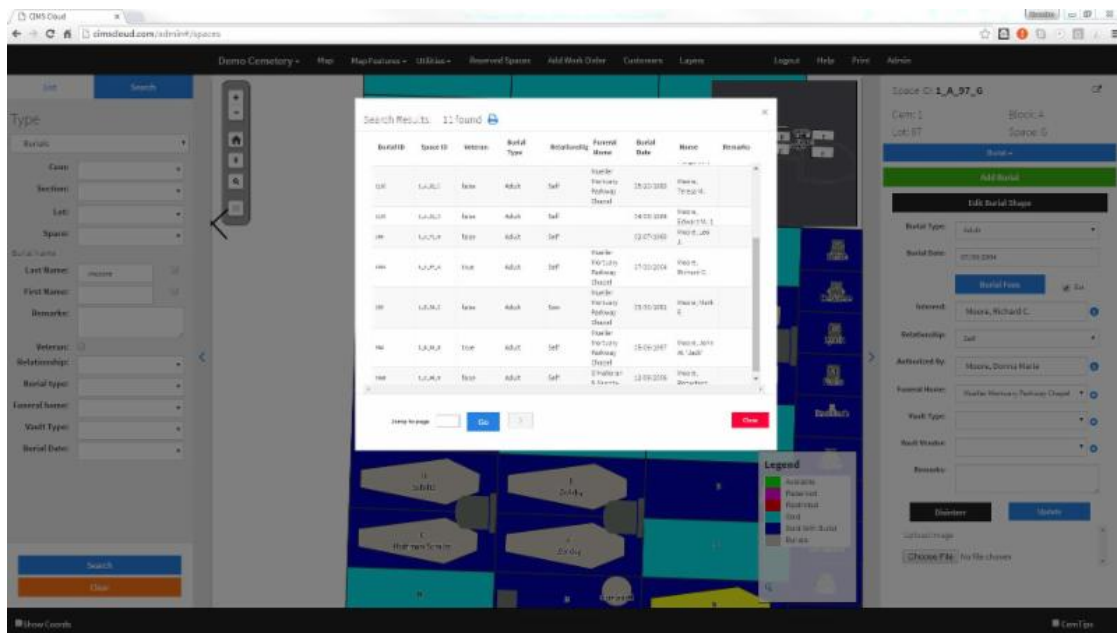
What about making this information accessible on people's smartphones?
eCIMS is designed in such a way so that it works well on a large computer screen or a small phone or tablet screen. By implementing eCIMS, you are giving the public the ability to search genealogy from their smartphones.

I'm interested in moving to CIMS Cloud, what's the next step?

We are compiling a list of clients that are ready to move to the cloud and will begin to work through them in the next few months. Even if have already spoken to someone at Ramaker about CIMS Cloud, you should send an email to cims@ramaker.com indicating you are ready to move to the cloud. We will get the process started.

I'm not ready to move to the cloud now, but maybe in a couple years, is that OK?

Absolutely! We plan on keeping the desktop version of CIMS and CIMS Light around for a long time. We know the cloud isn't for everyone, and we want to continue to provide great products for those clients as well.



Thanks for being patient with us as we get this new CIMS Platform up and running. We are excited to get more clients involved in CIMS Cloud and will be sharing more information about it in the future. You will be seeing more about CIMS Cloud on our website in the next few months.

Cemetery Information Management System (CIMS) is a product of:



855 Community Drive | Sauk City, WI 53583
www.ramaker.com | www.1cims.com
800-332-7532 | cims@ramaker.com